



VENDOR

Philip Dwyer

Moyaliffe Ballycahill Thurles Co Tipperary



**Mid Tipp Mart Thurles on
Wed Feb 12th @ 1pm Sharp**

Lot 1 CLODAIGH BLUEBELL

ID: IE331449850712

Breed: Charolais

Sex: Female

DOB: 17-Dec-2006

Owner: Philip Dwyer - Moyaliffe Ballycahill Thurles Co Tipperary

Breeder:

Sire: Doonally Nicefor
CF51

Grimaldi

Berlioz
Charmille

Ulna

Ouestun
Opale

Dam: Bollea Vasso
IE111046450379

Dovea Pinocchio

Janissaire
Ivanne

Kilmeany Pippa

Dovea Gin Tonic
Kilmeany Minnie

Star Rating (Within Charolais breed)	Economic Indexes	€uro value per progeny	Index Reliability	Star rating (across all beef breeds)
★★★	Terminal Index	€100	35% (Low)	★★★☆☆
★★★★★	Replacement Index Maternal Cow Traits : Maternal Progeny Traits :	€59 -€91 €150	35% (Low) 35% 35%	★★★☆☆
	Dairy Beef			

Star Rating (Within Charolais breed)	Key profit traits	Index Value	Trait Reliability	Star rating (across all beef breeds)
Expected progeny performance				
	Calving difficulty (% 3 & 4) Breed ave: 7.55%,All breeds ave: 4.99%	+6.7%	36% (Low)	
★★★★★	Docility (1-5 scale) Breed ave: 0.04,All breeds ave: 0	0.05 scale	48% (Average)	★★★★★
★★★	Carcass weight (kg) Breed ave: 31.88kg,All breeds ave: 22.75kg	+29kg	40% (Average)	★★★★★
★★★☆☆	Carcass conformation (1-15 scale) Breed ave: 1.88,All breeds ave: 1.81	+1.75 scale	39% (Low)	★★★☆☆

Expected daughter breeding performance				
	Daughter calving diff (% 3 & 4) Breed ave: 5.08%,All breeds ave: 5.28%	+3.8%	33% (Low)	
★★★★★	Daughter Milk (kg) Breed ave: -5.96kg,All breeds ave: 0.34kg	-3.8kg	35% (Low)	★★★☆☆
★★★	Daughter calving interval (days) Breed ave: 0days,All breeds ave: -0.59days	+0.58days	29% (Low)	★★★☆☆

Additional Information:

Served to RHI on 20th Jan 2013

Linear composites	Value	Reliability
Muscle	100	49%
Skeletal	100	46%
Function	88	28%

Herd data quality index

N/A

Linear scored progeny in evaluation

Lot 1 CLODAIGH ICE

ID: IE331449851198

Breed: Charolais

Sex: Male

DOB: 05-Oct-2013

Owner: Philip Dwyer - Moyaliffe Ballycahill Thurles Co Tipperary

Breeder:

Sire: Thrunton Nostradamus
TUT

Maerdy Location

Maerdy Forum
Clavering Uta

Thrunton Icicle

Moncur General
Thrunton Emma

Dam: Clodaigh Bluebell
IE331449850712

Doonally Nicefor

Grimaldi
Ulna

Bollea Vasso

Dovea Pinocchio
Kilmeany Pippa

Star Rating (Within Charolais breed)	Economic Indexes	€uro value per progeny	Index Reliability	Star rating (across all beef breeds)
★★★	Terminal Index	€112	30% (Low)	★★★★☆
★★★★★	Replacement Index Maternal Cow Traits : Maternal Progeny Traits :	€127 -€41 €168	28% (Low) 24% 31%	★★★★☆
	Dairy Beef			

Star Rating (Within Charolais breed)	Key profit traits	Index Value	Trait Reliability	Star rating (across all beef breeds)
Expected progeny performance				
	Calving difficulty (% 3 & 4) Breed ave: 7.55%,All breeds ave: 4.99%	+7.35%	33% (Low)	
★★★★★☆☆	Docility (1-5 scale) Breed ave: 0.04,All breeds ave: 0	0.11 scale	35% (Low)	★★★★★☆☆
★★★★☆☆	Carcass weight (kg) Breed ave: 31.88kg,All breeds ave: 22.75kg	+34kg	34% (Low)	★★★★★☆☆
★★★☆☆	Carcass conformation (1-15 scale) Breed ave: 1.88,All breeds ave: 1.81	+1.84 scale	34% (Low)	★★★☆☆

Expected daughter breeding performance				
	Daughter calving diff (% 3 & 4) Breed ave: 5.08%,All breeds ave: 5.28%	+3.6%	20% (Low)	
★★★★★☆☆	Daughter Milk (kg) Breed ave: -5.96kg,All breeds ave: 0.34kg	+1.2kg	24% (Low)	★★★☆☆
★★☆☆	Daughter calving interval (days) Breed ave: 0days,All breeds ave: -0.59days	+0.92days	21% (Low)	★★☆☆

Additional Information:

Linear composites	Value	Reliability
Muscle	101	25%
Skeletal	107	24%
Function	97	10%

Herd data quality index

N/A

Animal not scored.

Lot 2 CLODAIGH ELLA

ID: IE331449870920

Breed: Charolais

Sex: Female

DOB: 09-Apr-2009

Owner: Philip Dwyer - Moyaliffe Ballycahill Thurles Co Tipperary

Breeder:

Sire: Exclusif
ECF



Dam: Clodaigh Vanessa
IE331449820577



Star Rating (Within Charolais breed)	Economic Indexes	€uro value per progeny	Index Reliability	Star rating (across all beef breeds)
★	Terminal Index	€94	28% (Low)	★★★
★★	Replacement Index Maternal Cow Traits : Maternal Progeny Traits :	€14 -€129 €144	28% (Low) 28% 28%	★
	Dairy Beef			

Star Rating (Within Charolais breed)	Key profit traits	Index Value	Trait Reliability	Star rating (across all beef breeds)
Expected progeny performance				
	Calving difficulty (% 3 & 4) Breed ave: 7.55%,All breeds ave: 4.99%	+6.2%	33% (Low)	
★	Docility (1-5 scale) Breed ave: 0.04,All breeds ave: 0	-0.09 scale	34% (Low)	★★
★	Carcass weight (kg) Breed ave: 31.88kg,All breeds ave: 22.75kg	+23kg	31% (Low)	★★★
★	Carcass conformation (1-15 scale) Breed ave: 1.88,All breeds ave: 1.81	+1.65 scale	30% (Low)	★★★

Expected daughter breeding performance				
	Daughter calving diff (% 3 & 4) Breed ave: 5.08%,All breeds ave: 5.28%	+4.2%	24% (Low)	
★★	Daughter Milk (kg) Breed ave: -5.96kg,All breeds ave: 0.34kg	-7.1kg	36% (Low)	★
★★★★	Daughter calving interval (days) Breed ave: 0days,All breeds ave: -0.59days	-0.79days	20% (Low)	★★★

Additional Information:

Served to RHI on 20th Jan 2013

Linear composites	Value	Reliability
Muscle	90	31%
Skeletal	107	30%
Function	99	15%

Herd data quality index

N/A

Linear scored progeny in evaluation

Lot 2 CLODAIGH INCE

ID: IE331449881201

Breed: Charolais

Sex: Male

DOB: 26-Nov-2013

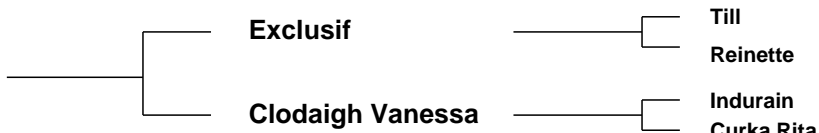
Owner: Philip Dwyer - Moyaliffe Ballycahill Thurles Co Tipperary

Breeder:

Sire: Malicieux
MIX



Dam: Clodaigh Ella
IE331449870920



Star Rating (Within Charolais breed)	Economic Indexes	€uro value per progeny	Index Reliability	Star rating (across all beef breeds)
★★	Terminal Index	€104	29% (Low)	★★★
★★★	Replacement Index Maternal Cow Traits : Maternal Progeny Traits :	€38	28% (Low)	★
	Dairy Beef			

Star Rating (Within Charolais breed)	Key profit traits	Index Value	Trait Reliability	Star rating (across all beef breeds)
Expected progeny performance				
	Calving difficulty (% 3 & 4) Breed ave: 7.55%,All breeds ave: 4.99%	+5.65%	32% (Low)	
	Docility (1-5 scale) Breed ave: 0.04,All breeds ave: 0	scale		
★	Carcass weight (kg) Breed ave: 31.88kg,All breeds ave: 22.75kg	+25.5kg	33% (Low)	★★★★★
★★	Carcass conformation (1-15 scale) Breed ave: 1.88,All breeds ave: 1.81	+1.75 scale	33% (Low)	★★★

Expected daughter breeding performance				
	Daughter calving diff (% 3 & 4) Breed ave: 5.08%,All breeds ave: 5.28%	+6.35%	26% (Low)	
★	Daughter Milk (kg) Breed ave: -5.96kg,All breeds ave: 0.34kg	-8.8kg	32% (Low)	★
★★★★	Daughter calving interval (days) Breed ave: 0days,All breeds ave: -0.59days	-1.08days	24% (Low)	★★★

Additional Information:

Linear composites	Value	Reliability
Muscle	95	32%
Skeletal	103	32%
Function	92	21%

Herd data quality index

N/A

Animal not scored.

Lot 3 CLODAIGH FLORA

ID: IE331449831007

Breed: Charolais

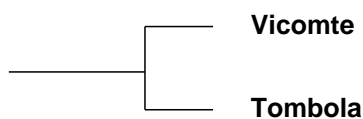
Sex: Female

DOB: 20-Dec-2010

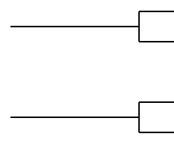
Owner: Philip Dwyer - Moyaliffe Ballycahill Thurles Co Tipperary

Breeder:

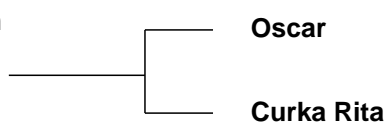
Sire: Gicomte
GMT



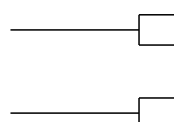
Mario
Poupee



Dam: Clodaigh Bawn
IE331449830710



Major
Toise



Curka Nigel
0698 Knockane (96f) Melodie

Star Rating (Within Charolais breed)	Economic Indexes	€uro value per progeny	Index Reliability	Star rating (across all beef breeds)
★★★	Terminal Index	€100	31% (Low)	★★★☆☆
★	Replacement Index Maternal Cow Traits : Maternal Progeny Traits :	-€19 -€165 €147	30% (Low) 30% 31%	★☆☆☆☆
	Dairy Beef			

Star Rating (Within Charolais breed)	Key profit traits	Index Value	Trait Reliability	Star rating (across all beef breeds)
Expected progeny performance				
	Calving difficulty (% 3 & 4) Breed ave: 7.55%,All breeds ave: 4.99%	+8%	34% (Low)	
★★★☆☆	Docility (1-5 scale) Breed ave: 0.04,All breeds ave: 0	-0.01 scale	45% (Average)	★★★☆☆
★★★	Carcass weight (kg) Breed ave: 31.88kg,All breeds ave: 22.75kg	+29kg	34% (Low)	★★★★★
★★★	Carcass conformation (1-15 scale) Breed ave: 1.88,All breeds ave: 1.81	+1.81 scale	32% (Low)	★★★☆☆

Expected daughter breeding performance				
	Daughter calving diff (% 3 & 4) Breed ave: 5.08%,All breeds ave: 5.28%	+4.3%	26% (Low)	
★	Daughter Milk (kg) Breed ave: -5.96kg,All breeds ave: 0.34kg	-9.2kg	32% (Low)	★☆☆☆☆
★★★☆☆	Daughter calving interval (days) Breed ave: 0days,All breeds ave: -0.59days	+0.45days	27% (Low)	★★★☆☆

Additional Information:

Served to PNY on Jan 20th 2014

Linear composites	Value	Reliability
Muscle	100	47%
Skeletal	104	44%
Function	100	23%

Herd data quality index

N/A

Animal scored. Linear scores and weaning weights in evaluations

Lot 3 CLODAIGH ITA

ID: IE331449861199

Breed: Charolais

Sex: Female

DOB: 29-Oct-2013

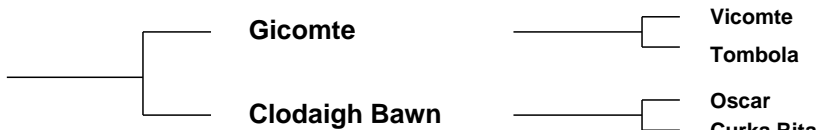
Owner: Philip Dwyer - Moyalliffe Ballycahill Thurles Co Tipperary

Breeder:

Sire: Malicieux
MIX



Dam: Clodaigh Flora
IE331449831007



Star Rating (Within Charolais breed)	Economic Indexes	€uro value per progeny	Index Reliability	Star rating (across all beef breeds)
★★★	Terminal Index	€106	30% (Low)	★★★
★★	Replacement Index Maternal Cow Traits : Maternal Progeny Traits :	€16	28% (Low)	★
	Dairy Beef			

Star Rating (Within Charolais breed)	Key profit traits	Index Value	Trait Reliability	Star rating (across all beef breeds)
Expected progeny performance				
	Calving difficulty (% 3 & 4) Breed ave: 7.55%,All breeds ave: 4.99%	+6.55%	33% (Low)	
	Docility (1-5 scale) Breed ave: 0.04,All breeds ave: 0	scale		
★★	Carcass weight (kg) Breed ave: 31.88kg,All breeds ave: 22.75kg	+28.5kg	34% (Low)	★★★★
★★	Carcass conformation (1-15 scale) Breed ave: 1.88,All breeds ave: 1.81	+1.83 scale	33% (Low)	★★★

Expected daughter breeding performance				
	Daughter calving diff (% 3 & 4) Breed ave: 5.08%,All breeds ave: 5.28%	+6.4%	27% (Low)	
★	Daughter Milk (kg) Breed ave: -5.96kg,All breeds ave: 0.34kg	-9.8kg	31% (Low)	★
★★★	Daughter calving interval (days) Breed ave: 0days,All breeds ave: -0.59days	-0.45days	26% (Low)	★★★

Additional Information:

Linear composites	Value	Reliability
Muscle	100	36%
Skeletal	102	35%
Function	93	23%

Herd data quality index

N/A

Animal not scored.

Lot 4 CLODAIGH FIFI

ID: IE331449861001

Breed: Charolais

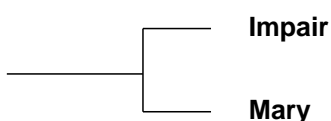
Sex: Female

DOB: 23-Sep-2010

Owner: Philip Dwyer - Moyaliffe Ballycahill Thurles Co Tipperary

Breeder:

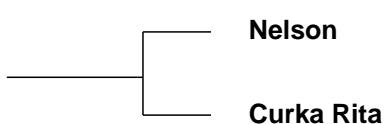
Sire: Pinay
PNY



Blason
Officine

Homere
Jacinthe

Dam: Clodaigh Carol
IE331449810782



Indice
Etoile

Curka Nigel
0698 Knockane (96f) Melodie

Star Rating (Within Charolais breed)	Economic Indexes	€uro value per progeny	Index Reliability	Star rating (across all beef breeds)
★★★	Terminal Index	€101	26% (Low)	★★★☆☆
★★★★★★	Replacement Index Maternal Cow Traits : Maternal Progeny Traits :	€122 -€48 €170	24% (Low) 22% 27%	★★★☆☆
	Dairy Beef			

Star Rating (Within Charolais breed)	Key profit traits	Index Value	Trait Reliability	Star rating (across all beef breeds)
Expected progeny performance				
	Calving difficulty (% 3 & 4) Breed ave: 7.55%,All breeds ave: 4.99%	+3.8%	30% (Low)	
★★★★	Docility (1-5 scale) Breed ave: 0.04,All breeds ave: 0	0.04 scale	43% (Average)	★★★★☆
★☆☆	Carcass weight (kg) Breed ave: 31.88kg,All breeds ave: 22.75kg	+24kg	28% (Low)	★★★☆☆
★☆☆	Carcass conformation (1-15 scale) Breed ave: 1.88,All breeds ave: 1.81	+1.64 scale	28% (Low)	★★☆☆☆

Expected daughter breeding performance				
	Daughter calving diff (% 3 & 4) Breed ave: 5.08%,All breeds ave: 5.28%	+3.9%	16% (V Low)	
★★★★★★	Daughter Milk (kg) Breed ave: -5.96kg,All breeds ave: 0.34kg	+0.5kg	25% (Low)	★★★★★
★★★★★★☆	Daughter calving interval (days) Breed ave: 0days,All breeds ave: -0.59days	-1.99days	17% (V Low)	★★★★★☆☆

Additional Information:

Served on the 18th of Jan 2014

Linear composites	Value	Reliability
Muscle	90	29%
Skeletal	94	28%
Function	101	16%

Herd data quality index

N/A

Animal scored. Linear scores and weaning weights in evaluations

Lot 4 CLODAIGH IVANHOE

ID: IE331449841197

Breed: Charolais

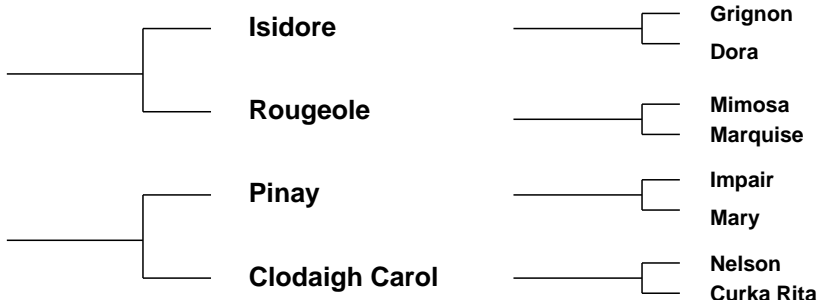
Sex: Male

DOB: 26-Sep-2013

Owner: Philip Dwyer - Moyaliffe Ballycahill Thurles Co Tipperary

Breeder:

Sire: Vera Cruz
VCZ



Star Rating (Within Charolais breed)	Economic Indexes	€uro value per progeny	Index Reliability	Star rating (across all beef breeds)
★★★	Terminal Index	€110	28% (Low)	★★★
★★★★★	Replacement Index Maternal Cow Traits : Maternal Progeny Traits :	€125 -€65 €190	26% (Low) 23% 28%	★★★
	Dairy Beef			

Star Rating (Within Charolais breed)	Key profit traits	Index Value	Trait Reliability	Star rating (across all beef breeds)
Expected progeny performance				
	Calving difficulty (% 3 & 4) Breed ave: 7.55%,All breeds ave: 4.99%	+2.9%	31% (Low)	
★★★☆☆	Docility (1-5 scale) Breed ave: 0.04,All breeds ave: 0	0.03 scale	34% (Low)	★★★☆☆
☆☆	Carcass weight (kg) Breed ave: 31.88kg,All breeds ave: 22.75kg	+22kg	31% (Low)	★★☆☆
★★	Carcass conformation (1-15 scale) Breed ave: 1.88,All breeds ave: 1.81	+1.81 scale	31% (Low)	★★★

Expected daughter breeding performance				
	Daughter calving diff (% 3 & 4) Breed ave: 5.08%,All breeds ave: 5.28%	+5%	18% (V Low)	
★★★★★	Daughter Milk (kg) Breed ave: -5.96kg,All breeds ave: 0.34kg	-4.3kg	25% (Low)	★★☆
★★★★★☆☆	Daughter calving interval (days) Breed ave: 0days,All breeds ave: -0.59days	-1.87days	20% (Low)	★★★★☆☆

Additional Information:

Animal not scored.

Linear composites	Value	Reliability
Muscle	97	29%
Skeletal	86	29%
Function	101	17%

Herd data quality index

N/A

Lot 5 CLODAIGH CAROLINE

ID: IE331449820783

Breed: Charolais

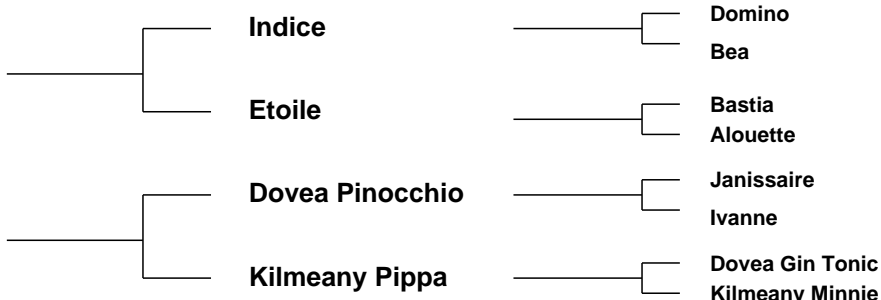
Sex: Female

DOB: 10-Nov-2007

Owner: Philip Dwyer - Moyaliffe Ballycahill Thurles Co Tipperary

Breeder:

Sire: Nelson
NEX



Star Rating (Within Charolais breed)	Economic Indexes	€uro value per progeny	Index Reliability	Star rating (across all beef breeds)
★★★	Terminal Index	€111	34% (Low)	★★★★☆
★★★★★	Replacement Index Maternal Cow Traits : Maternal Progeny Traits :	€71 -€107 €179	35% (Low) 36% 34%	★★
	Dairy Beef			

Star Rating (Within Charolais breed)	Key profit traits	Index Value	Trait Reliability	Star rating (across all beef breeds)
Expected progeny performance				
	Calving difficulty (% 3 & 4) Breed ave: 7.55%,All breeds ave: 4.99%	+5.3%	37% (Low)	
★★★★★	Docility (1-5 scale) Breed ave: 0.04,All breeds ave: 0	0.08 scale	49% (Average)	★★★★★☆☆
★★☆	Carcass weight (kg) Breed ave: 31.88kg,All breeds ave: 22.75kg	+28kg	39% (Low)	★★★★★
★★☆	Carcass conformation (1-15 scale) Breed ave: 1.88,All breeds ave: 1.81	+1.75 scale	35% (Low)	★★★☆☆

Expected daughter breeding performance				
	Daughter calving diff (% 3 & 4) Breed ave: 5.08%,All breeds ave: 5.28%	+4.7%	30% (Low)	
★	Daughter Milk (kg) Breed ave: -5.96kg,All breeds ave: 0.34kg	-9.9kg	51% (Average)	★
★★★★★	Daughter calving interval (days) Breed ave: 0days,All breeds ave: -0.59days	-2.82days	25% (Low)	★★★★★

Additional Information:

Served to MIX on 2nd of May 2013

Linear composites	Value	Reliability
Muscle	100	54%
Skeletal	91	50%
Function	91	27%

Herd data quality index

N/A

Linear scored progeny in evaluation

Lot 6 CLODAIGH ENA

ID: IE331449840926

Breed: Charolais

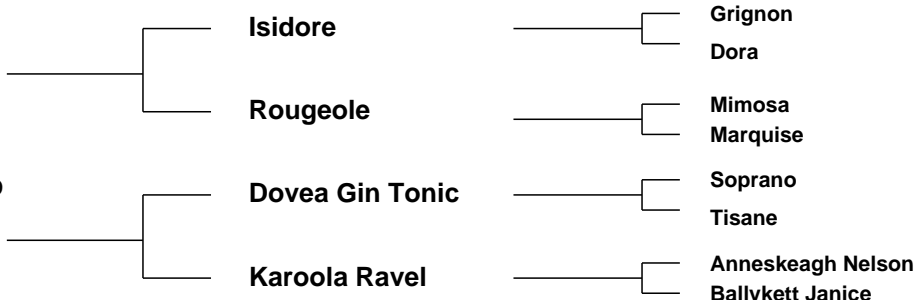
Sex: Female

DOB: 22-Apr-2009

Owner: Philip Dwyer - Moyaliffe Ballycahill Thurles Co Tipperary

Breeder:

Sire: Vera Cruz
VCZ



Star Rating (Within Charolais breed)	Economic Indexes	€uro value per progeny	Index Reliability	Star rating (across all beef breeds)
★★	Terminal Index	€105	30% (Low)	★★★
★★★★☆	Replacement Index Maternal Cow Traits : Maternal Progeny Traits :	€54 -€125 €179	30% (Low) 30% 30%	★★☆
	Dairy Beef			

Star Rating (Within Charolais breed)	Key profit traits	Index Value	Trait Reliability	Star rating (across all beef breeds)
Expected progeny performance				
	Calving difficulty (% 3 & 4) Breed ave: 7.55%,All breeds ave: 4.99%	+3.5%	34% (Low)	
★★★★★☆☆	Docility (1-5 scale) Breed ave: 0.04,All breeds ave: 0	0.11 scale	36% (Low)	★★★★★☆☆
☆☆	Carcass weight (kg) Breed ave: 31.88kg,All breeds ave: 22.75kg	+20kg	34% (Low)	★★★☆☆
★★☆	Carcass conformation (1-15 scale) Breed ave: 1.88,All breeds ave: 1.81	+1.78 scale	31% (Low)	★★★☆☆

Expected daughter breeding performance				
	Daughter calving diff (% 3 & 4) Breed ave: 5.08%,All breeds ave: 5.28%	+7.2%	25% (Low)	
★★☆	Daughter Milk (kg) Breed ave: -5.96kg,All breeds ave: 0.34kg	-8.3kg	40% (Average)	☆☆
★★★★☆	Daughter calving interval (days) Breed ave: 0days,All breeds ave: -0.59days	+0.29days	23% (Low)	★★★

Additional Information:

Served to NZI on the 25th June 2013

Linear composites	Value	Reliability
Muscle	103	37%
Skeletal	88	36%
Function	96	20%

Herd data quality index

N/A

Linear scored progeny in evaluation

Lot 7 CLODAIGH BAWN

ID: IE331449830710

Breed: Charolais

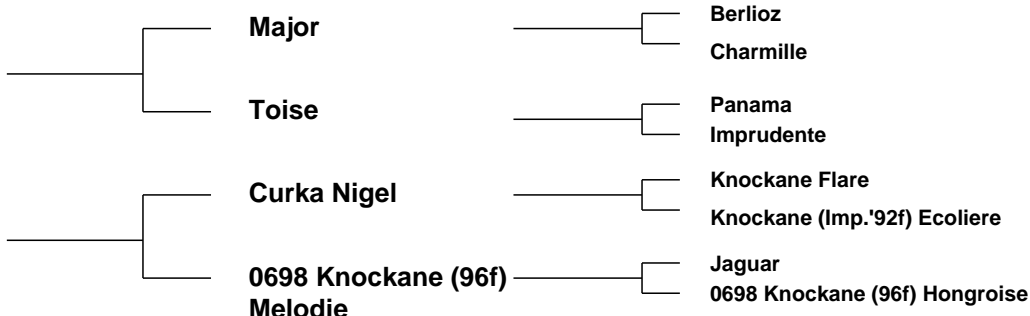
Sex: Female

DOB: 23-Oct-2006

Owner: Philip Dwyer - Moyaliffe Ballycahill Thurles Co Tipperary

Breeder:

Sire: Oscar
OSC



Star Rating (Within Charolais breed)	Economic Indexes	€uro value per progeny	Index Reliability	Star rating (across all beef breeds)
★	Terminal Index	€81	32% (Low)	★★
★	Replacement Index Maternal Cow Traits : Maternal Progeny Traits :	-€8 -€121 €113	34% (Low) 37% 32%	★
	Dairy Beef			

Star Rating (Within Charolais breed)	Key profit traits	Index Value	Trait Reliability	Star rating (across all beef breeds)
Expected progeny performance				
	Calving difficulty (% 3 & 4) Breed ave: 7.55%,All breeds ave: 4.99%	+8.5%	36% (Low)	
★	Docility (1-5 scale) Breed ave: 0.04,All breeds ave: 0	-0.16 scale	50% (Average)	★
★	Carcass weight (kg) Breed ave: 31.88kg,All breeds ave: 22.75kg	+27kg	34% (Low)	★★★★
★	Carcass conformation (1-15 scale) Breed ave: 1.88,All breeds ave: 1.81	+1.67 scale	32% (Low)	★★★

Expected daughter breeding performance				
	Daughter calving diff (% 3 & 4) Breed ave: 5.08%,All breeds ave: 5.28%	+4%	30% (Low)	
★	Daughter Milk (kg) Breed ave: -5.96kg,All breeds ave: 0.34kg	-8.8kg	57% (Average)	★
★★★★★	Daughter calving interval (days) Breed ave: 0days,All breeds ave: -0.59days	-3days	26% (Low)	★★★★

Additional Information:

Served to RHI on the 26th of April 2013

Linear composites	Value	Reliability
Muscle	94	39%
Skeletal	110	38%
Function	110	24%

Herd data quality index

N/A

Linear scored progeny in evaluation

Lot 8 CLODAIGH GISELLE

ID: IE331449821047

Breed: Charolais

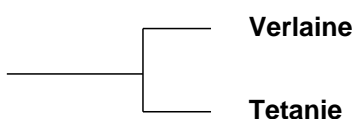
Sex: Female

DOB: 15-Nov-2011

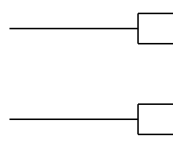
Owner: Philip Dwyer - Moyaliffe Ballycahill Thurles Co Tipperary

Breeder:

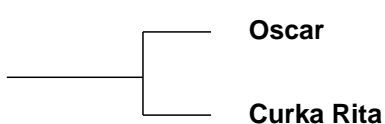
Sire: Balthazar
CF85



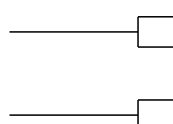
Port Royal
Poesie



Dam: Clodaigh Bawn
IE331449830710



Major
Toise



Curka Nigel
0698 Knockane (96f) Melodie

Star Rating (Within Charolais breed)	Economic Indexes	€uro value per progeny	Index Reliability	Star rating (across all beef breeds)
★★★	Terminal Index	€100	32% (Low)	★★★
★	Replacement Index Maternal Cow Traits : Maternal Progeny Traits :	-€24 -€162 €138	31% (Low) 29% 32%	★
	Dairy Beef			

Star Rating (Within Charolais breed)	Key profit traits	Index Value	Trait Reliability	Star rating (across all beef breeds)
Expected progeny performance				
	Calving difficulty (% 3 & 4) Breed ave: 7.55%,All breeds ave: 4.99%	+9.1%	34% (Low)	
★	Docility (1-5 scale) Breed ave: 0.04,All breeds ave: 0	-0.23 scale	46% (Average)	★
★★★★★	Carcass weight (kg) Breed ave: 31.88kg,All breeds ave: 22.75kg	+34kg	34% (Low)	★★★★★
★★★★	Carcass conformation (1-15 scale) Breed ave: 1.88,All breeds ave: 1.81	+1.89 scale	32% (Low)	★★★★

Expected daughter breeding performance				
	Daughter calving diff (% 3 & 4) Breed ave: 5.08%,All breeds ave: 5.28%	+5.2%	23% (Low)	
★	Daughter Milk (kg) Breed ave: -5.96kg,All breeds ave: 0.34kg	-9.2kg	30% (Low)	★
★★	Daughter calving interval (days) Breed ave: 0days,All breeds ave: -0.59days	+0.92days	27% (Low)	★★

Additional Information:

Served to EXT on the 25th Nov 2013

Linear composites	Value	Reliability
Muscle	103	44%
Skeletal	118	41%
Function	99	25%

Herd data quality index

N/A

Animal scored. Linear scores and weaning weights in evaluations

Lot 9 CLODAIGH HIPPIE

ID: IE331449871092

Breed: Charolais

Sex: Female

DOB: 05-Mar-2012

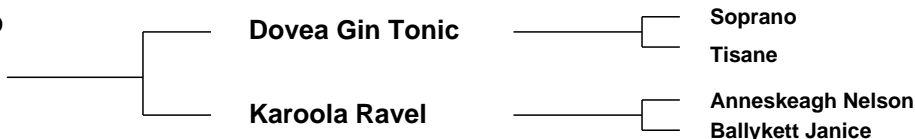
Owner: Philip Dwyer - Moyaliffe Ballycahill Thurles Co Tipperary

Breeder:

Sire: Excellent
EXT



Dam: Karoola Tempo
IE182216680233



Star Rating (Within Charolais breed)	Economic Indexes	€uro value per progeny	Index Reliability	Star rating (across all beef breeds)
★★★☆☆	Terminal Index	€106	34% (Low)	★★★☆☆
★★☆☆☆	Replacement Index Maternal Cow Traits : Maternal Progeny Traits :	€20 -€148 €167	34% (Low) 33% 34%	★☆☆☆☆
	Dairy Beef			

Star Rating (Within Charolais breed)	Key profit traits	Index Value	Trait Reliability	Star rating (across all beef breeds)
Expected progeny performance				
	Calving difficulty (% 3 & 4) Breed ave: 7.55%,All breeds ave: 4.99%	+5.5%	35% (Low)	
★★★★★☆☆	Docility (1-5 scale) Breed ave: 0.04,All breeds ave: 0	0.06 scale	32% (Low)	★★★★★☆☆
★☆☆☆☆	Carcass weight (kg) Breed ave: 31.88kg,All breeds ave: 22.75kg	+27kg	40% (Average)	★★★★★☆☆
★★☆☆☆	Carcass conformation (1-15 scale) Breed ave: 1.88,All breeds ave: 1.81	+1.75 scale	34% (Low)	★★★☆☆☆☆

Expected daughter breeding performance				
	Daughter calving diff (% 3 & 4) Breed ave: 5.08%,All breeds ave: 5.28%	+6.6%	30% (Low)	
★★☆☆☆	Daughter Milk (kg) Breed ave: -5.96kg,All breeds ave: 0.34kg	-7.2kg	34% (Low)	★☆☆☆☆
★★★★★☆☆	Daughter calving interval (days) Breed ave: 0days,All breeds ave: -0.59days	-0.31days	31% (Low)	★★★★★☆☆

Additional Information:

Served to OSI on 30th of Nov 2013

Linear composites	Value	Reliability
Muscle	101	46%
Skeletal	106	43%
Function	93	28%

Herd data quality index

N/A

Animal scored. Linear scores and weaning weights in evaluations

Lot 10 CLODAIGH HOPE

ID: IE331449811112

Breed: Charolais

Sex: Female

DOB: 21-May-2012

Owner: Philip Dwyer - Moyaliffe Ballycahill Thurles Co Tipperary

Breeder:

Sire: Lyonsdemesne Tzar
TZA

Domino

Aimable
Anemone

Kilboy Frivole (Imp
91f)

Britisch B
Badoit

Dam: Curka Rita
IE341433890148

Curka Nigel

Knockane Flare
Knockane (Imp.'92f) Ecoliere

0698 Knockane (96f)
Melodie

Jaguar
0698 Knockane (96f) Hongroise

Star Rating (Within Charolais breed)	Economic Indexes	€uro value per progeny	Index Reliability	Star rating (across all beef breeds)
★	Terminal Index	€90	31% (Low)	★★
★★	Replacement Index Maternal Cow Traits : Maternal Progeny Traits :	€5 -€122 €127	31% (Low) 31% 31%	★
	Dairy Beef			

Star Rating (Within Charolais breed)	Key profit traits	Index Value	Trait Reliability	Star rating (across all beef breeds)
Expected progeny performance				
	Calving difficulty (% 3 & 4) Breed ave: 7.55%,All breeds ave: 4.99%	+8.1%	31% (Low)	
★	Docility (1-5 scale) Breed ave: 0.04,All breeds ave: 0	-0.15 scale	45% (Average)	★
★★	Carcass weight (kg) Breed ave: 31.88kg,All breeds ave: 22.75kg	+29kg	36% (Low)	★★★★
★	Carcass conformation (1-15 scale) Breed ave: 1.88,All breeds ave: 1.81	+1.71 scale	34% (Low)	★★★

Expected daughter breeding performance				
	Daughter calving diff (% 3 & 4) Breed ave: 5.08%,All breeds ave: 5.28%	+3.5%	27% (Low)	
★	Daughter Milk (kg) Breed ave: -5.96kg,All breeds ave: 0.34kg	-9.1kg	34% (Low)	★
★★★★★	Daughter calving interval (days) Breed ave: 0days,All breeds ave: -0.59days	-4.06days	27% (Low)	★★★★★

Additional Information:

Linear composites	Value	Reliability
Muscle	102	48%
Skeletal	109	45%
Function	102	25%

Herd data quality index

N/A

Animal scored. Linear scores and weaning weights in evaluations